

FRUITVALE MIDDLE

Campus Improvement Plan

2021/2022

Learners Today - Leaders Tomorrow



Albert Abshire III
P. O. Box 77 Fruitvale, TX 75127
(903) 896 - 4363
abshirea@fruitvaleisd.com

Date Reviewed:

DMAC Solutions ®

Page 1 of 21

Date Approved:

11/15/2021

FRUITVALE MIDDLE

Mission

Learners Today - Leaders Tomorrow

Vision

Visioning Committee Belief Statements:

The Partnership of families, community members, students, and Fruitvale Independent School District employees is critical to each student's growth and success.

We believe in the value of instilling work ethic, integrity, perseverance, and motivation in future generations.

We believe in providing a 21st-century education interwoven with real world applications.

We believe in modeling and guiding students toward becoming good citizens.

We believe in unlocking each individual student's potential.

We believe in a supportive and collaborative school culture for students, teachers, and families.

Nondiscrimination Notice

FRUITVALE MIDDLE does not discriminate on the basis of race, color, national origin, sex, or disability in providing education services, activities, and programs, including vocational programs, in accordance with Title VI of the Civil Rights Act of 1964, as amended; Title IX of the Educational Amendments of 1972; and section 504 of the rehabilitation Act of 1973; as amended.

FRUITVALE MIDDLE Site Base

Name	Position
Callaway, Marcy	Community Representative
Easley, Cody	Teacher
Johnson, Autumn	Parent Representative
Abshire, Albert	District User
Hodge, Amanda	Teacher
Hodges, Candace	Teacher
McCully, Justina	Paraprofessionals
Wooding, Debbie	Teacher

Resources

Resource	Source	Amount
ESSER II	Federal	\$403,319
ESSER III	Federal	\$603,865
IDEA Special Education	Federal	\$84,711
Instructional Continuity Grant	Federal	\$23,000
REAP-SRSA	Federal	\$34,986
TCLAS - ESSER	Federal	\$431,000
Title I	Federal	\$117,994
Title IIA Principal and Teacher Improvement	Federal	\$17,554
Title IV Safe and Drug Free	Federal	\$10,000
BLGP - ELAR	State	\$33,223
BLGP - Math	State	\$88,977
Dyslexia Allotment	State	\$28,952
Instructional Allotment	State	\$37,898
Lone Star, Yr. 3	State	\$52,019
State Compensatory	State	\$346,290
TCLAS - GR	State	\$328,744
Teacher Incentive Allotment	State	\$25,911

FRUITVALE MIDDLE

Goal 1. Fruitvale Junior High School will improve classroom instruction and student achievement through personalized learning.

Objective 1. Fruitvale Junior High School will improve classroom instruction through blended learning techniques. Student instruction will be supplemented with technology and the teachers will act as facilitators in the classroom.

Activity/Strategy	Person(s) Responsible	Timeline	Resources	Evaluation
1. Fruitvale Junior High School staff will help develop the calendar to provide training to teachers in innovative instructional methods. (Title I SW Elements: 2.2,2.3,2.4,2.5,3.2) (Target Group: 6th,7th ,8th) (Strategic Priorities: 2) (ESF: 1.2,5.2,5.3)	Counselor(s), Curriculum Director, MS Principal, Teachers	Ongoing	(F)Title I	Criteria: 2020 - 2021 school year calendar
2. Fruitvale Junior High School staff will implement student individual plans for students with fidelity. Teachers will begin offering choices in learning to students to further increase student engagement in classrooms. (Title I SW Elements: 1.1,2.2,2.4,2.5) (Target Group: 6th,7th ,8th) (Strategic Priorities: 2) (ESF: 2.2,5.1,5.2,5.3)	Blended Learning Project Manager, Curriculum Director, MS Principal, Teachers	Ongoing	(S)BLGP - ELAR, (S)BLGP - Math	Criteria: Lesson Plans
3. Teachers will utilize Project Based Learning as a way to engage students by means of investigating and responding to authentic, engaging, and complex questions, problems or tasks. (Title I SW Elements: 1.1,2.2,2.4,2.5) (Target Group: 6th,7th ,8th) (Strategic Priorities: 2) (ESF: 5.1,5.2)	Curriculum Director, MS Principal, Teachers	Ongoing	(S)Lone Star, Yr. 3	Criteria: Lesson Plans with PBLs integrated
4. Fruitvale Junior High School teachers will be trained in and utilize data driven instruction to improve student achievement. (Title I SW Elements: 1.1,2.2,2.4,2.5) (Target Group: 6th,7th ,8th) (Strategic Priorities: 2) (ESF: 2.2,5.3)	Curriculum Director, MS Principal, Teachers	Ongoing	(F)Title I	Criteria: 100% of staff trained in DDI by May 2020
5. Fruitvale Junior High School teachers will create and use daily lesson plans with assessments built in from TEKS Resources System and assessment center. (Title I SW Elements: 1.1,2.2,2.5) (Target Group: 6th,7th ,8th) (Strategic Priorities: 2) (ESF: 4.1,5.1,5.2,5.3)	Curriculum Director, MS Principal, Teachers	Ongoing	(F)Title I	
6. Fruitvale Junior High School teachers will implement student individual plans over a three	Blended Learning Project Manager, Curriculum Director,	Ongoing	(S)BLGP - ELAR, (S)BLGP - Math	Criteria: Lesson Plans

FRUITVALE MIDDLE

Goal 1. Fruitvale Junior High School will improve classroom instruction and student achievement through personalized learning.

Objective 1. Fruitvale Junior High School will improve classroom instruction through blended learning techniques. Student instruction will be supplemented with technology and the teachers will act as facilitators in the classroom.

Activity/Strategy	Person(s) Responsible	Timeline	Resources	Evaluation
year period in conjunction with a consulting company. Teachers will offer students a choice in learning to increase student engagement. (Title I SW Elements: 1.1,2.2,2.4,2.5) (Target Group: 6th,7th ,8th) (Strategic Priorities: 2,4) (ESF: 2.2,5.1,5.2)	MS Principal, Teachers			
7. Fruitvale Junior High School teachers will receive training on the station rotation model. (Title I SW Elements: 1.1,2.2,2.4,2.5) (Target Group: 6th,7th ,8th) (Strategic Priorities: 2) (ESF: 5.2)	Blended Learning Project Manager, Curriculum Director, MS Principal, Teachers	Ongoing	(S)BLGP - ELAR, (S)BLGP - Math	Criteria: 6th grade teachers trained by Fall 2020. 6th - 8th grade teachers trained by Fall 2022.
8. Fruitvale Junior High will review classrooms setting and look into flexible seating options. (Title I SW Elements: 2.2,2.5) (Target Group: 6th,7th ,8th) (Strategic Priorities: 2) (ESF: 5.2)	Blended Learning Project Manager, Curriculum Director, MS Principal, Teachers	Ongoing	(S)BLGP - ELAR, (S)BLGP - Math	Criteria: Number purchased

FRUITVALE MIDDLE

Goal 2. Fruitvale Junior High School will change classroom instruction through blended learning and focus on individual student goals to develop character, citizenship, digital citizenship, employability skills and classroom content.

Objective 1. Fruitvale Junior High School will change classroom instruction through blended learning and focus on individual student goals to develop character, citizenship, digital citizenship, employability skills and classroom content.

Activity/Strategy	Person(s) Responsible	Timeline	Resources	Evaluation
1. Fruitvale Junior High School teachers and staff will work to develop citizenship through organizational activities that teach students about voting, elections, leadership roles and service in the school. (Title I SW Elements: 1.1,2.1,2.2) (Target Group: 6th,7th ,8th) (Strategic Priorities: 3) (ESF: 3.1,3.4)	Campus Personnel, Counselor(s), MS Principal, Teachers	Ongoing	(L)Local Funds	Criteria: Observation
2. Fruitvale Junior High School teachers will receive training to implement individual coaching/goal setting with students in the classroom. (Title I SW Elements: 1.1,2.2,2.4,2.5) (Target Group: 6th,7th ,8th) (Strategic Priorities: 3) (ESF: 5.1,5.2)	Blended Learning Project Manager, Curriculum Director, MS Principal, Teachers	Ongoing	(S)BLGP - ELAR, (S)BLGP - Math	Criteria: Lesson Plans
3. Fruitvale Junior High School teachers will provide students the tools, training and materials to monitor and track their own academic and social progress toward goals. (Title I SW Elements: 2.4,2.5) (Target Group: 6th,7th ,8th) (Strategic Priorities: 3) (ESF: 5.2)	Blended Learning Project Manager, Curriculum Director, MS Principal, Teachers	Ongoing	(S)BLGP - ELAR, (S)BLGP - Math	Criteria: Lesson Plans
4. Fruitvale Junior High School teachers will implement Character Strong to assist with character building and conflict resolution. (Title I SW Elements: 1.1,2.2,2.6) (Target Group: 6th,7th ,8th) (ESF: 3)	Counselor(s), MS Principal, Teachers	Ongoing		Criteria: Classroom observations and discipline data from TxEIS

FRUITVALE MIDDLE

Goal 3. Fruitvale Junior High School will provide staff collaboration opportunities to plan for rigorous instruction in the classroom and teacher staff development to improve classroom instruction.

Objective 1. Fruitvale Junior High School will provide staff collaboration opportunities to plan for rigorous instruction in the classroom and teacher staff development to improve classroom instruction.

Activity/Strategy	Person(s) Responsible	Timeline	Resources	Evaluation
1. Fruitvale Junior High School staff will utilize DMAC to monitor student progress and make changes to individual remediation plans based on data to improve student performance. (Title I SW Elements: 2.2,2.5) (Target Group: 6th,7th ,8th) (Strategic Priorities: 2,3) (ESF: 5.2)	Curriculum Director, MS Principal, Teachers	Ongoing	(F)Title I	Criteria: Lesson Plans
2. Fruitvale Junior High School teachers will train on how to breakdown the TEKS in their content area. (Title I SW Elements: 1.1,2.2,2.5) (Target Group: 6th,7th ,8th) (Strategic Priorities: 1) (ESF: 2.2,4.1)	Curriculum Director, MS Principal, Teachers	Ongoing	(F)Title I	Criteria: Sign In Sheets

FRUITVALE MIDDLE

Goal 4. Fruitvale Junior High School will provide a safe learning environment for staff and students.

Objective 1. Fruitvale Junior High School will provide a safe learning environment for staff and students.

Activity/Strategy	Person(s) Responsible	Timeline	Resources	Evaluation
1. Fruitvale Junior High School will implement a threat assessment team as required by the law on campus. (Title I SW Elements: 1.1,2.1,2.2,2.6) (Target Group: 6th,7th ,8th) (ESF: 3)	Campus Personnel, Counselor(s), MS Principal, School Police Officer	Ongoing	(L)Local Funds	Criteria: Training Completion Certificates
2. Fruitvale Junior High School will implement digital citizenship lessons and develop teachers in the area of instructing students as digital natives. Future ready students who are informed and safe while utilizing technology. (Title I SW Elements: 2.1,2.2) (Target Group: 6th,7th ,8th) (Strategic Priorities: 3) (ESF: 3.1)	Curriculum Director, MS Principal, Teachers	Ongoing	(F)Title I, (S)Lone Star, Yr. 3	Criteria: Lesson Plans
3. Fruitvale Junior High School will train staff and implement the GOGUARDIAN program in classrooms to increase the monitoring of students online. (Title I SW Elements: 2.1,2.2) (Target Group: 6th,7th ,8th) (Strategic Priorities: 3) (ESF: 3.2)	MS Principal, Teachers, Technology Director	Ongoing	(L)Local Funds	Criteria: Go Guardian software reports
4. Fruitvale Junior High School will train staff in character building, emergency operations, and appropriate interventions with students. (Title I SW Elements: 2.2) (Target Group: 6th,7th ,8th) (Strategic Priorities: 1) (ESF: 3)	Counselor(s), Curriculum Director, MS Principal, Superintendent, Teachers	Ongoing	(L)Local Funds	Criteria: Training Sign-In Sheets
5. Fruitvale Junior High School staff and teachers will work to improve student behaviors that reduce success in the classroom through truancy plans, discipline management plans, and consistency district wide. (Title I SW Elements: 1.1,2.1,2.2,2.6) (Target Group: 6th,7th ,8th) (ESF: 3)	Counselor(s), MS Principal, School Police Officer, Teachers	Ongoing		Criteria: Attendance and Discipline data in TxEIS

FRUITVALE MIDDLE

- Goal 5.** Fruitvale Junior High School will recruit and retain highly qualified teachers. Teachers will be provided mentorship and explicit training to develop into master teachers.
- Objective 1.** Fruitvale Junior High School will recruit and retain highly qualified teachers. Teachers will be provided mentorship and explicit training to develop into master teachers.

Activity/Strategy	Person(s) Responsible	Timeline	Resources	Evaluation
1. Fruitvale Junior High School teachers will help create promotional materials to use at recruitment events. (Title I SW Elements: 2.2,2.4) (Target Group: 6th,7th ,8th) (Strategic Priorities: 1) (ESF: 2.1)	Counselor(s), Curriculum Director, Teachers	Ongoing	(L)Local Funds	Criteria: Promotional Materials
2. Fruitvale Junior High School teachers will take advantage of additional days offered by the state to provide time for the required instructional training. (Title I SW Elements: 2.1,2.2,2.4) (Target Group: 6th,7th ,8th) (Strategic Priorities: 1,2) (ESF: 5.2)	Curriculum Director, MS Principal, Teachers	Ongoing		Criteria: Training Sign In Sheets
3. Fruitvale Junior High School teachers will use additional time for training through state waivers to develop high quality instructional plans. (Title I SW Elements: 1.1,2.2,2.5) (Target Group: 6th,7th ,8th) (Strategic Priorities: 1,2,3) (ESF: 5)	Curriculum Director, MS Principal, Teachers	Ongoing		Criteria: Lesson Plans

FRUITVALE MIDDLE

Goal 6. Fruitvale Junior High School will provide opportunities for parents to be equal partners in their child's education.

Objective 1. Fruitvale Junior High School will provide opportunities for parents to be equal partners in their child's education.

Activity/Strategy	Person(s) Responsible	Timeline	Resources	Evaluation
1. Fruitvale Junior High School will provide opportunities for parents/community and students to interact at school sponsored/community events. (Title I SW Elements: 1.1,2.1,3.1) (Target Group: 6th,7th ,8th) (ESF: 3.4)	Counselor(s), Curriculum Director, MS Principal, Superintendent, Teachers	Ongoing	(L)Local Funds	Criteria: Parent Sign In Sheets
2. Fruitvale Junior High School staff will be trained each year in customer service and continually evaluate our progress in this area. (Title I SW Elements: 2.2,3.1) (Target Group: 6th,7th ,8th) (Strategic Priorities: 1) (ESF: 3.3,3.4)	Curriculum Director, MS Principal, Superintendent, Teachers	Ongoing		Criteria: Training Sign In Sheets
3. Fruitvale Junior High School will provide attendance incentives for individual and groups of students and implement truancy measures as needed. (Title I SW Elements: 2.2,2.6) (Target Group: 6th,7th ,8th) (ESF: 3.2,3.3)	Counselor(s), MS Principal, School Police Officer, Teachers	Ongoing	(L)Local Funds	Criteria: Attendance Data in TxEIS

FRUITVALE MIDDLE

Goal 7. Appendix

Objective 1. Attendance and Dropout Prevention Strategies

Activity/Strategy	Person(s) Responsible	Timeline	Resources	Evaluation
1. Campus committees and district/campus administrators will review and analyze annual dropout records and current/pending cases. (Target Group: AtRisk)	Homeless Liaison, MS Principal, Site-Based Committee, Teachers	Ongoing		Criteria: PEIMS Records; RDA Reports
2. Attendance will be closely monitored with timely interventions for students with chronic absenteeism. Home visits will be conducted as needed. (Target Group: AtRisk)	Counselor(s), MS Principal, School Police Officer	Ongoing		Criteria: Attendance Records
3. Continue DAEP with Rains ISD and utilize Edmentum to allow students to continue their education. (Target Group: 6th,7th ,8th)	MS Principal, Superintendent	Ongoing	(S)State Compensatory	Criteria: Number of students served in DAEP
4. Tutoring provided to assist students struggling in academics. (Title I SW Elements: 1.1,2.1,2.4,2.5,2.6) (Target Group: ECD,ESL,LEP,SPED,AtRisk,Dys,504,6th,7th ,8th) (Strategic Priorities: 2,4) (ESF: 5.3,5.4)	Teachers	Ongoing	(S)State Compensatory	Criteria: Tutorial Sign - In Sheets; Report Cards
5. Students identified as pregnant will be offered services through the Pregnancy Related Services (PRS) once documentation has been completed and verified. It is not required that each student need or use each/every service. Compensatory Education Home Instruction (CEHI) counseling services, if necessary. Health services from the school nurse. (Target Group: AtRisk)	Counselor(s), Dean of Student Services, Nurse	Ongoing		Criteria: CEHI Logs
6. Provide appropriate services to address the needs of students identified as homeless. (Target Group: AtRisk) (Strategic Priorities: 2) (ESF: 3.3,3.4)	Counselor(s), Homeless Liaison	Ongoing	(S)State Compensatory, (S)TEHCY	Criteria: Number of homeless students served
7. Utilize paraprofessionals to assist with tutoring struggling students within classrooms. (Target Group: AtRisk) (Strategic Priorities:	MS Principal, Paraprofessionals, Teachers	Ongoing	(F)Title I, (S)State Compensatory	Criteria: Increase in student achievement on benchmark assessments

FRUITVALE MIDDLE

Goal 7. Appendix

Objective 1. Attendance and Dropout Prevention Strategies

Activity/Strategy	Person(s) Responsible	Timeline	Resources	Evaluation
2,4)				
8. Teachers will utilize resources such as the IXL, Lexia, and various curriculum resources to assist in the development of proper cognitive thinking processes and intervention for struggling students. (Title I SW Elements: 2.4,2.5) (Target Group: ECD,AtRisk,Dys,504,6th,7th ,8th) (Strategic Priorities: 2,4) (ESF: 5.2,5.3,5.4)	Curriculum Director, MS Principal, Paraprofessionals, Teachers	Ongoing	(F)ESSER III, (S)BLGP - Math, (S)Instructional Allotment	Criteria: Improvement on student assessments
9. Explicit, direct, small group, multisensory instruction for students identified as dyslexic and in need of dyslexia services. (Target Group: Dys) (Strategic Priorities: 2,4) (ESF: 3.3,5.3)	Dyslexia specialist	Ongoing	(S)State Compensatory	Criteria: Number of dyslexic student served; Progress on MTA Mastery Checks

FRUITVALE MIDDLE

Goal 7. Appendix

Objective 2. Higher Education Information Strategies

Activity/Strategy	Person(s) Responsible	Timeline	Resources	Evaluation
1. Parent meetings will be scheduled to provide transition information, post-secondary awareness, and financial assistance for all parents in 8th, 9th, and FAFSA night for parents. (Title I SW Elements: 3.1,3.2) (Target Group: 8th) (Strategic Priorities: 3)	Counselor(s), MS Principal	Ongoing	(S)ICIA	Criteria: Participants attending meetings; Surveys
2. College and career awareness opportunities will be schedule for 8th-12th grade students to help students with certification and career opportunities. (Target Group: 8th) (Strategic Priorities: 3)	Counselor(s), MS Principal	Ongoing	(S)ICIA, (S)Lone Star, Yr. 3	Criteria: Participants attending; Surveys; Career Pathway Graduation Plans
3. Develop a CTE Long Range Plan that will offer pathways leading to industry based certifications in multiple areas. (Target Group: CTE,6th,7th ,8th) (Strategic Priorities: 3)	Counselor(s), Curriculum Director, MS Principal	Ongoing		Criteria: Number of certification opportunities for students

FRUITVALE MIDDLE

Goal 7. Appendix

Objective 3. Specialized Training and Activities for Students and Staff

Activity/Strategy	Person(s) Responsible	Timeline	Resources	Evaluation
1. All Fruitvale Junior High staff will attend required Sexual Abuse and Prevention Training, Recognition of Maltreatment of Children, and Child Abuse & Trafficking Reporting Training. (Target Group: 6th,7th ,8th)	Counselor(s), Curriculum Director, Homeless Liaison	August and September		Criteria: Documentation of training
2. Fruitvale Junior High will provide Dating Violence Awareness programs. Campuses will inform and publicize information in hallways. (Target Group: 6th,7th ,8th)	Counselor(s), MS Principal, Nurse	Ongoing		Criteria: Visual observations; Scheduled announcements
3. Fruitvale Junior High will recognize October as Bullying Awareness Month with a variety of activities and instruction. (Target Group: 6th,7th ,8th)	Counselor(s)	October		Criteria: Activities conducted and reported to campus administration
4. Fruitvale Junior High will participate in Red Ribbon Week and a variety of activities. (Target Group: AtRisk,6th,7th ,8th)	Counselor(s), Teachers	October		Criteria: Red Ribbon Week schedule of events
5. Fruitvale Junior High will provide staff and students training for the prevention, identification, and consequences of bullying. District policies regarding bullying will be communicated and posted as required. (Target Group: 6th,7th ,8th)	Counselor(s), MS Principal, Teachers	Ongoing		Criteria: Documentation of training
6. Early mental health intervention and suicide prevention training provided to all staff annually. (Target Group: 6th,7th ,8th)	Counselor(s), Curriculum Director	August and September		Criteria: Training documentation

Comprehensive Needs Assessment

Demographics

Student Achievement

Student Achievement Strengths

Strong content area teachers

Student Achievement Needs

Improve attendance percentages

School Culture and Climate

School Culture and Climate Strengths

Strong classroom management skills by most teachers.

School Culture and Climate Needs

Everyone knowing what the dress code is and enforcing it. Revamping ISS.

Comprehensive Needs Assessment

Staff Quality, Recruitment and Retention

Staff Quality, Recruitment and Retention Strengths

Teachers that work hard to get better at teaching.

Staff Quality, Recruitment and Retention Needs

All teachers being certified in ESL.

Curriculum, Instruction and Assessment

Curriculum, Instruction and Assessment Strengths

Support provided to our SPED and dyslexic students.

Curriculum, Instruction and Assessment Needs

Continue getting G/T students involved.

Family and Community Involvement

Family and Community Involvement Strengths

Comprehensive Needs Assessment

Many activities that parents can attend with their children including athletic events, band concerts, and FFA events.

Family and Community Involvement Needs

More parent involvement.

School Context and Organization

School Context and Organization Strengths

All core classes are scheduled for the first six periods of the day, so that if students need to leave early for activities they're not missing core classes.

School Context and Organization Needs

Better student participation at before and after school tutorials.

Technology

Technology Strengths

Access to online curriculum and tutorial programs.

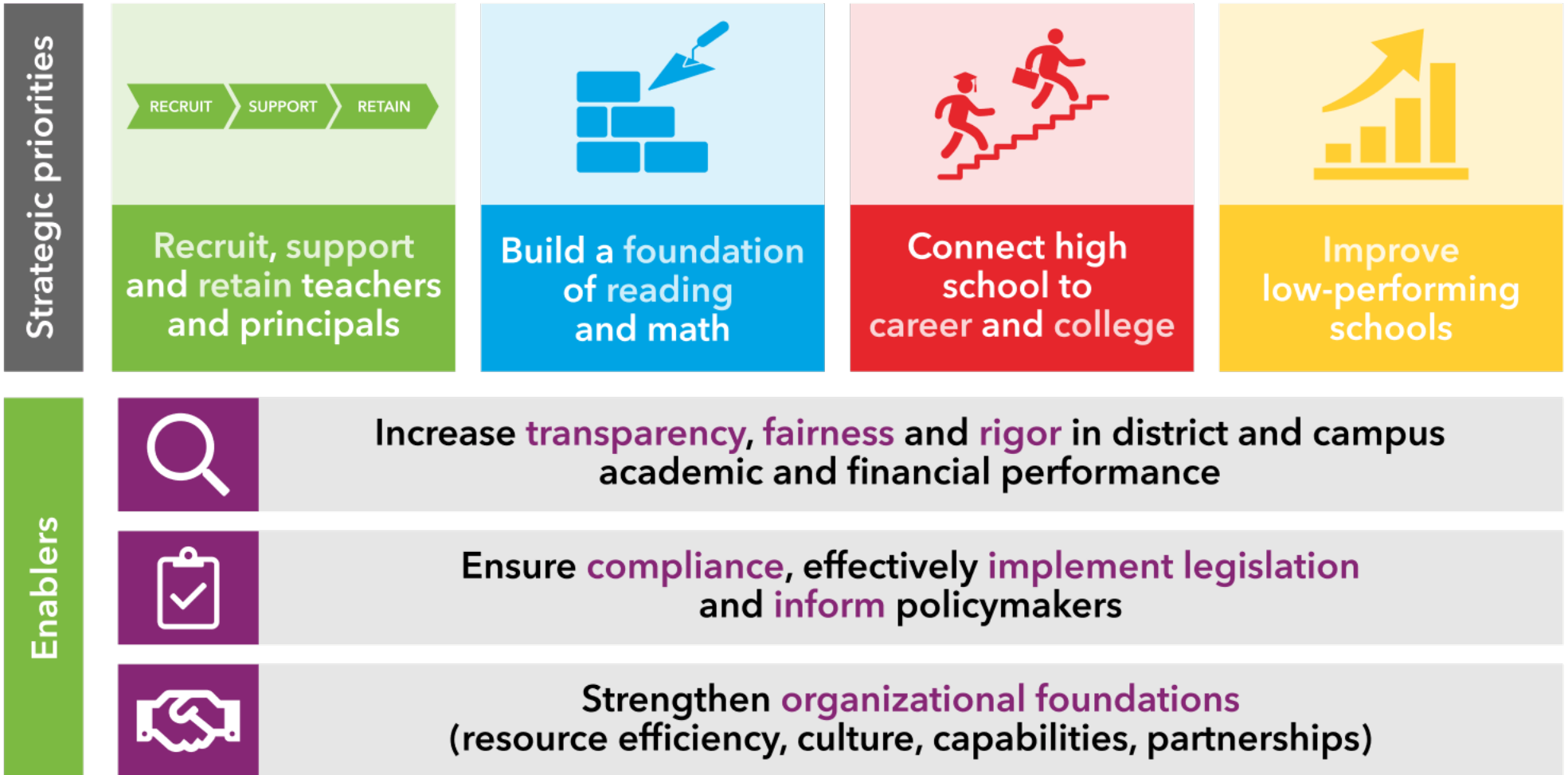
Comprehensive Needs Assessment

Technology Needs

Software to monitor what students are doing with the technology.

Other

Every child, prepared for success in college, a career or the military.



**adapted from TEA Strategic Plan - <https://tea.texas.gov>*